

The Post



Your Local News Magazine - Issue No. 115

LET'S ALL BE IN THIS TOGETHER !!

Numbers of new cases and deaths from Covid-19 have dropped significantly over the past month or so, but we're not out of the woods yet !!

As we slowly come out of the current lockdown please adhere to all Covid regulations. We don't want to see numbers rise again and we definitely don't want to see any further lockdowns.

Get tested when needed !! Get vaccinated when offered !! If we all continue to play our part, we will be that bit closer to a future that is more familiar !! So please remember Hands, Face, Space, Fresh Air.



LOWEST OF THE LOW !!



Over the weekend of March 13th/14th, the casing of the defibrillator unit located on the wall outside the Town Hall on Station Road was ripped open and the defibrillator inside was stolen. For someone to do this, they really must be 'the lowest of the low.'

These defibrillators are sited in our community to help save lives. Do the culprits not realise it could be their parent, grandparent or other family member that may, one day, be in need of one of these machines to help save their lives.

The Town Council are in process of replacing the stolen unit but are asking for help in catching the individuals involved. If you

have any information regarding the theft of this life saving machine, please get in touch with the Council or the Police direct.

LOCAL ELECTIONS

Locally, on Thursday May 6th, we will be voting for our Police & Crime Commissioner, two Parish vacancies in the South Ward of Shirebrook Town Council, and Derbyshire County Councillors for the Shirebrook & Pleasley and Bolsover South (which includes Langwith & Langwith Junction) Wards.

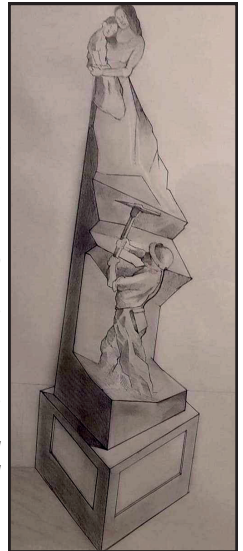
County Councillors Christine Dale and Joan Dixon are once again asking for your support !! See Christine's regular report inside.

WELL ON THE WAY !

More than half of the £180,000 target to erect a Colliery Monument, dedicated to Shirebrook's history of mining, has now been raised.

The Memorial Fund's committee would like to thank everyone who has got on board with this project and would welcome any future interest.

See back page for update.



POLITICAL COMMENT

Investing in the future.

Society is constantly changing and major events can bring about change even more rapidly and alarmingly.



The spread of the 'virus' was just that event. The last 12 months saw tremendous pressure placed on most of the world's population and with different countries adopting differing tactics the media have had a field day.

There has been opinion after opinion and statement after statement that added day after day to the fear that has been as pandemic as the pandemic. You've all watched and heard the reports each day for over a year now and are now seeing the growing unrest in society, even the backbiting in Europe is becoming more apparent after Brexit.

We are out of Europe and we must find a way to stimulate the economy no matter what the virus decides to mutate into or what pettiness President Macron, the EU's chief critic of the UK, comes out with next.

The UK is a big market place so any attempt to punish will do more damage to their own economy. Continuing to trade with our European neighbours and also trading with the rest of the world is our future investment.

Locally, what can we do to stimulate our own economy ? For a start we mustn't put all our faith in a 'knight in shining armour coming to rescue the damsel in distress'; the government's much lauded 'levelling up' programme that places most of this area in priority two, demonstrates that.

You would be forgiven for thinking it was purely political, as I did initially, but a chat with Professor Steve Fothergill put a different slant on it. Steve has been a professor at the Centre for Regional Economic and Social Research for nearly 30 years and is of the opinion that the formula constructed by the governments mandarins is essentially

flawed and will be or must be looked at by the politicians in order to deliver on the 'levelling up' of the country.

What we can do while we wait is continue to invest in our high streets and businesses.....**keep it local** where we can. Let's try and generate the political will to invest in new infrastructure to make it easier and more attractive for **'inward investment'**.

A clean environment, more and better designed housing, working with other authorities and organisations on projects. (Project Collaboration).

Creating a think tank to explore all talents is one way to achieve this. Everyone together, even though we may be on opposite sides of the political spectrum, must recognise the imperatives of collaboration. **It's not new but we have to try !!**

The elections are with us and there has been concerns about door canvassing. The fact that the government has lifted the restrictions on both elections and canvassing doesn't mean that it's compulsory. I think that many people will not welcome political canvassers given the fear surrounding the pandemic.

I know that Christine (Dale), who is once again standing as your County Council Labour candidate, shares that view. Even though the infection rate is falling and most people have had their jab she doesn't want to put residents at risk unless they ask for her to call.

Over the past 12 months Bolsover District Council has been urging community groups to keep in touch and try to maintain the impetus they have had for many years. The social benefits of these groups are self-evident and we want to ensure we support them to continue to meet. Do you need some support and advice to either re-establish your group or maybe begin a new one ? Also, there are lots of community groups already established that may want to share their experience and knowledge of setting up such groups, who we can put you in touch with. **S.W.F.**

HOTPOINT PRICE BUSTER



- > NEW HOTPOINT WASHING MACHINE
- > FAST 1400RPM SPIN 7kg LOAD
- > A++ RATED ENERGY EFFICIENCY
- > RAPID 15 MINUTE WASH OPTION
- > FAST FREE HOME DELIVERY
- > 10 YEAR PARTS GUARANTEE

10 YEAR PARTS GUARANTEE

FREE DELIVERY

SAVE £50 NOW ONLY

£299.95

NORMALLY £349.95

H. FLINT & SON

QUALITY, VALUE AND GREAT SERVICE FOR OVER 74 YEARS!

57 MAIN STREET SHIREBROOK
FAST FREE DELIVERY 742415

COVID ROUND-UP

In November last year, the Office for National Statistics said that recent data was showing that the rate of Coronavirus infections across England and Wales was slowing down. **However, this feeling of optimism didn't last long !!**

Early December saw us see the second peak begin to climb, and in early January the Prime Minister once again, instructed people to stay at home to **control the virus, protect the NHS and save lives.**

All schools and colleges moved to 'remote learning' (except for the children of key workers). All non-essential retail, hospitality and personal care services closed. Pubs, clubs, restaurants and the majority of leisure facilities were once again unable to operate, and restrictions, we were told, would last until at least the middle of February.

On a good point the vaccination programme had begun and the government promised that all 50 years old and above, and those most vulnerable, would have been offered their first vaccination by the beginning of May.

The second wave peaked on January 8th with more than 68,000 new cases recorded in a 24hour period. A few weeks later we saw the highest number of deaths (within 28 days of a positive test) in 24hours with 1,725 deaths recorded for January 27th.

Numbers for new cases and recorded deaths began to drop, but February saw almost 360,000 reported new cases and a total of 16,692 deaths. The numbers showed that by following government guidelines along with the role out of the vaccination we were putting up a good fight against the pandemic.

On February 22nd the government published their 'Roadmap out of Lockdown'. A four step programme to get life back to some kind of normality. Step One included:

March 8th, children and students were allowed back into school. A twice-weekly rapid testing programme for secondary and college pupils, to reduce the chance of the virus spreading in schools, was introduced. People were allowed to leave home for recreation and exercise with their household or their bubble and care home residents were allowed one regular visitor.

March 29th, some levels of 'social contact' were relaxed. Outdoor gatherings were allowed with a maximum of six people or two households, making it easier for friends and families to meet outside.

Outdoor sports facilities such as tennis, golf and open-air swimming pools were allowed to reopen. The 'stay at home' rule ended but many restrictions remained in place.

At the time of writing this article it has just been confirmed that measures in Step Two will commence on April 12th. These include:

The opening of non-essential retail, personal care premises such as hairdressers and nail salons, public buildings including libraries, community centres and gyms. Outdoor attractions such as zoos and theme parks, self contained accommodation such as camp sites and caravan parks, where indoor facilities are not shared with other households, can all open !!

Hospitality venues will be allowed to serve people outdoors **ONLY**. They must offer 'table-service' **ONLY** and the wider social contact rules **MUST** apply in these settings to prevent indoor mixing between different households.

These first two Steps and any future Steps were and are based on four tests: the successful deployment of the vaccine, evidence showing vaccines are sufficiently effective in reducing hospitalisations and deaths, infection rates not risking a



DOUBLE M
GLAZING
SYSTEMS

Quality & Excellent Service Throughout

**10 Year Insurance Backed Guarantee by Lloyds
Competitive Pricing Policy - All Repairs
Undertaken - Soffits & Fascias Fitted**

**NO GIMMICKS – THE STRAIGHTEST
DEAL YOU'LL EVER GET !!**

**HOME IMPROVEMENT
SPECIALISTS**

**KITCHENS & BATHROOMS
SOFFITS & FASCIAS
DOUBLE GLAZING REPAIRS
GARDEN WALLS & GARAGES**

HNC Qualified Award Winning Bricklay-

Phone Mark Potter TODAY !!



You Won't Be Disappointed

Tel: 01623 744448

Mob: 07971 788209

FENSA
Registered Company

VISIT US @

www.doublemglazing.co.uk



POLISHED BLACK HEADSTONE
Including Design, Lettering & Fitting
ONLY £650

WARSOP MEMORIALS

46, Church Street, Warsop, Mansfield, Notts. NG20 0AR

*Long Lasting Tribute of Hand Crafted Memorials For Your Loved Ones.
Serving the Area for more than 10 years.*

*Largest Showroom in the Area. Over 100 Memorials to View.
Before you make any decision why not pay us a visit !!*

Telephone: 01623 845845 or 07929 391370
e : mail warsopmemorials@yahoo.co.uk

Recommended by Funeral Directors. Price Promise any genuine Quote beaten.

surge in hospitalisations putting pressure on the NHS, and assessments of the risks is not fundamentally changed by new Variants of Concern.

Only when the government is sure that it is safe to move from one step to the next will the final decision be made !!

Step Three - NOT before May 17th may include: Easing limits on seeing friends and families wherever possible. Meaning that most legal restrictions on meeting others outdoors will be lifted, although gatherings of more than 30 people will remain illegal.

Indoor hospitality will reopen, and as in Step Two, customers will have to order, eat and drink while seated. Other indoor locations to open in Step Three will be cinemas, children's play areas and the rest of the accommodation sector. Some larger performances and sporting events in indoor and outdoor venues will be able to offer limited numbers.

Before moving onto Step Four the government will complete a review of social distancing and other long term measures that have been in place to cut transmission.

Step Four - NOT before June 21st may include: the removing of all legal limits on social contact. The opening of all remaining businesses such as night clubs, and the easing on restrictions on large events and performances.

As we move through each of these phases of the Roadmap, we **MUST** all remember that Covid-19 remains a part of our lives and that we are going to have to keep living our lives differently to keep ourselves and others safe.

We **MUST** carry on with 'hands, face and space' and comply with Covid secure measures that may remain in place. Meet outdoors when we can and keep letting fresh air in.

Get tested when needed !! Get vaccinated when offered !! If we all continue to play our part, we will be that bit closer to a future that is more familiar !!



April 4th saw only ten Coronavirus related deaths reported in the UK, and reports of new cases where at their lowest since early September. But the fight is not over and we **MUST** all play our part in battling the spread of Covid-19. **Even as we get vaccinated, we're not out of the woods !!**

Portland Road, Shirebrook - Family Run Business since 1919



WRIGHT'S GARAGE

**MOT's (Class 1, 2 & 4),
SERVICING, REPAIRS & DIAGNOSTIC WORK
Brakes - Clutches - Exhausts - Tyres
Air Conditioning Re-Gas**

Telephone: 01623 747351 - 07733 360258

FREE Car Wash with every Service - FREE SUMMER Check with every M.O.T.

SmigS Domestic Commercial Electrical Services

DARREN SMITH - Part P Registered ELECSA

Domestic & Commercial Installations - Re-Wires - Extensions - Outside Lighting

Data Installations - Testing & Inspecting - PAT Testing - Fire Alarms

All your electrical requirements carried out by professional & qualified personnel.

Phone: 07717 358759 or 07518 624062 e-mail : smigsmister@aol.com

The 'numbers' are frightening !! As of April 7th, more than 133million across the World have been diagnosed with Covid-19 with approaching 3million deaths. The UK has seen 4.36million cases and more than 127,000 deaths.

As I write this almost 32million of us have had their first vaccination and 5.5million have had their second. And even though it's being predicted that the vaccine rollout may be slower in the UK until the end of July, we are streets ahead compared to many parts of the world.

Everyone aged over 50 in the UK or those at most risk have been invited for their vaccination !!

What of the future ? If and when we have Covid under control it is anticipated that we will still be living with it for the foreseeable future and perhaps having a 'booster' much like having a flu jab.

Vaccine 'passports' are much being talked about, and could become part of life in England. A government report recently revealed that Covid Status Certification (passports) was likely to become a feature of life until the pandemic threat recedes, and perhaps when all restrictions are lifted.

The passports would show if a person has had a jab, had Covid in the past six months, or had a negative test inside the past 48 hours. **Counties across the world may want a similar system in place before allowing unrestricted travel.**

WHAT HAVE YOU MISSED MOST ?

Over the past year, many of us have had to live our lives totally different from what was the 'norm'. But what have you missed most over the past year or so of lockdown ? **Perhaps:**

Giving someone a handshake or someone a hug.

Going on holiday.

Meeting friends for an impromptu meal or drink.

Family get-togethers.

Going to the supermarket without queuing.

Being able to attend key annual events without restrictions.

Getting a haircut

Going to a live sports or music event

Going to the cinema.

Seeing elderly relatives.

On the other hand, as we are slowly coming out of a life without restrictions, what will you miss about lockdown ? **Perhaps:**

Food deliveries and the take-a-way 'excuse'.

Being able to dress informally instead of dressing for work. No make-up.

Getting to know your neighbours better.

House holidays, working from home and zoom calls.

Surprise visitors and guests.

One thing is for sure. Life, for many will never be the same again, for the better and the worst. But I suppose that many will now look at their lives in a slightly different way.

WARSOP MOBILE FOOT CLINIC

Registered Foot Health Practitioner

Treatments include:

Nails Trimmed - Callus Reduced - Corns Removed

Verruca & Ingrown Toenails Treated

SUSAN A. DENNIS S.A.C. Dip FHPP FHPT

For more information or to book an appointment Telephone:

01623 844539 or 07811 151594



POLICE REPORT

Your Shirebrook Safer Neighbourhood Policing Team led by Sergeant Mark Church, work alongside partnerships / agencies to both target and reduce crime and anti-social behaviour, with the aim of keeping our area safe.

"I am Sgt Mark Church and I am proud to be in charge of the 'Shirebrook Safer Neighbourhood Team.' I hope that you have all been coping with the third national lockdown and the effect its had on our day-to-day existence. I'm aware that it's been harder on some than others but hope is on the horizon !!

"I can only offer my thanks to all the good people who have been sticking to the rules, that have helped us protect the NHS as best it can in these especially hard times.

"Like everyone, I am really looking forward to the restrictions being gradually lifted, so that I can start seeing family and friends once again.

"The thing that my Team and I have missed the most is the face to face engagement with the people of Shirebrook and I hope that this is something that we can start doing again in the very near future. Whilst we wait for this to happen I thought that I would use the opportunity to ask two of my newest team members to introduce themselves."



"Hi, my name is Andy McNaughton and I am a Police Community Support Officer for the Shirebrook SNT. I have worked for Derbyshire Constabulary for over a year starting off in the south of the county covering areas such as Swadlincote and Melbourne. **Moving to Shirebrook around two**

months ago.

"I mainly deal with anti-social behaviour (ASB) and low-level crimes. I work in the local community identifying problems and hoping to provide long

term solutions to the problems working with a 'multi-agency' approach.

"I also work closely with schools, community groups, local councils and housing associations to help improve the area. I previously worked in a residential children's home for young children with behavioural and learning difficulties, and am passionate about helping young people have the best start in life."



"My name's Sam and I've been a Police Community Support Officer based in Shirebrook for almost a year now. As part of the Shirebrook SNT, I cover not only Shirebrook, but Langwith, Scarcliffe and Whaley Thorns.

"When I joined as a PCSO I knew that I would be based in the community and after reading the job-role description, I knew it would fit me as a person, and I couldn't wait to give it a go.

"Fast forward almost a year and I couldn't feel prouder to be part of the Shirebrook team and getting involved in what we do.

"My favourite part of the job is ensuring and processing the safeguarding of vulnerable members of the community and taking part in the partnership work that we do which involves working alongside the council, the fire service and the numerous other organisations and charities in Shirebrook.

"Shirebrook has become a part of me and I'm enthusiastic when it comes to helping keep Shirebrook, not only a safe place to live, but also in helping bring back a fantastic community spirit."

"If you see them on their patrols, and whilst adhering to Covid protocols, why not have a chat with them."




MANSFIELD & DISTRICT
Funeral Service

As a small independent Funeral Director we are committed to providing a first class service and ensuring our families receive a personal and fitting farewell for their loved ones, tailored to your personal requirements.

Direct Cremation from £1,495 - Complete Funeral Service from £2,595
Pre-paid Funeral Plans available upon request.

An Independent Family Funeral Service
offering a 24 Hour Personal Service.
Covering Mansfield and the surrounding areas.

Call us on: **01623 305897**

Email : mdfuneralservice@outlook.com

Website - <https://funeraldirectorsmansfield.co.uk>

JUST A REMINDER - PSPO's

Over the past few weeks there has been more and more reports of teenagers gathering on our parks/open spaces drinking and being a general nuisance (see STC Chair report on page 10 & 11).

As we are coming out of restrictions and we are getting vaccinated against Covid, please remember, we still need to be adhering to government regulations, especially when meeting others.

The current ruling is: 'People meeting outdoors, including in ones garden, are allowed with up to SIX people. Children of ALL ages are included in the count !!'

Also, with lighter nights now upon us and summer on the horizon, can we remind you that Shirebrook, Langwith Junction and Langwith are still under a 'Public Spaces Protection Order'. **But what is a Public Spaces Protection Order ??**

A Public Spaces Protection Order gives Police more powers to target anti-social behaviour such as drinking alcohol, spitting, urinating or dropping litter. The Order was introduced by Bolsover District Council to combat nuisance behaviour, street drinking and large groups causing excessive noise and covers **ALL** public spaces in Shirebrook, Langwith Junction and Langwith !!

The Order gives the Police and the Council greater powers to deal with those who breach the Order and all the conditions displayed around the area.

Police and Council Officers can give on the spot fines of up to £100 to anyone found to be breaching the conditions, or even a conviction and fine of up to £1,000 in court.

To report any form of anti-social behaviour, you can call the Police on 101 or visit www.derbyshire.police.uk/Contact-Us

So we ask you, as parents and grand parents to have a quiet word, if your teenagers are going out of an evening, and **REMIN**D them of the socially distancing rules and the **Public Spaces Protection Order**.

D.W. CONSTRUCTION

Local Builder & Bricklayer

**Professional, Affordable & Reliable.
Conservatory Installation & Alterations
Garage Conversions - Boundary Walls
Garden Rooms - Porches
And Much Much More !!**

**Call: 01623 847267 or 07952 093143
for your FREE quote**

find us at www.dwconstruction.co.uk

MERCURY GARAGE

Carter Lane, Warsop Vale, NG20 8XB



Including:

CLASS 4, 7 & MOBILE HOMES

**Booking advisable but possible
slots available for waiting.**

**SERVICING & GENERAL
MECHANICAL WORK
UNDERTAKEN**

Telephone:

01623 747500

WARSOP VALE TYRE SERVICES

New & 2nd Hand Tyres Available

Wheel Alignment

Computer Wheel Balancing.

FREE Tyre Alignment Check.

FREE Fitting.

Puncture Repairs.

Telephone;

01623 743592

'We'll do our best to beat the rest !!'

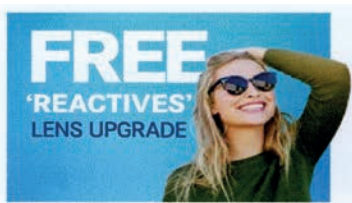
**WINDSCREEN REPAIRS
from £12.00**

**CAR 'AIR CONDITIONING'
SERVICE NOW AVAILABLE !!**

TOP QUALITY AT AN AFFORDABLE PRICE

SAVE £££s

By choosing any one of our great offers...



ALL Frame Prices Now Include Single Vision Lenses!!

iVision
OPTICIANS

Follow us on 
www.ivationopticians.com

6-8 Peel Square, **Barnsley**, S70 1YA
Tel: **01226 731271**
Barnsley@ivationopticians.com

77a High Street, **Wombwell**, Barnsley, S73 8HS
Tel: **01226 752149**
Wombwell@ivationopticians.com

2a Boroughgate, **Otley**, LS21 3AL
Tel: **01943 462423**
Otley@ivationopticians.com

73 Carlton Street, **Castleford**, WF10 1DE
Tel: **01977 552776**
Castleford@ivationopticians.com

76 Victoria Street, **Shirebrook**, Mansfield, NG20 8AQ
Tel: **01623 742369**
Shirebrook@ivationopticians.com

11 Windsor Court, **Morley**, Leeds, LS27 9BG
Tel: **01132 381366**
Morley@ivationopticians.com

Service with a smile... ALWAYS!

Please ask our friendly and helpful staff for full details of all our offers

WORDSEARCH COMPETITION

During the past year, with nothing else to do, many of us must have found ourselves glued in front of the TV, and for sport lovers, especially those with more than the 'normal' aerial, what a treat we've had. Football, cricket, snooker, darts and golf, albeit played without fans, has been a constant companion.

But did you know that golf is one of the oldest organised sports in history ?

Listed below are the names of the current top twenty ranked golfers in the world. Simply find their surnames in the wordsearch opposite and send your completed entry to: Studio 160, Station Road, Shirebrook, NG20 8UG.

Dustin JOHNSON	Justin THOMAS
Jon RAHM	Colin MORIKAWA
Bryson DECHAMBEAU	
Xander SCHAUFFELE	Patrick REED
Tyrrell HATTON	Webb SIMPSON
Patrick CANTLEY	Rory MCIROY
Brooks KOEPKA	Tony FINAU
Viktor HOVLAND	Daniel BERGER
Matt FITZPATRICK	Billy HORSCHEL
Sungjae IM	Paul CASEY
Lee WESTWOOD	Harris ENGLISH

DID YOU KNOW

While the 'modern' game of golf originated in 15th century Scotland, the game's ancient origins are unclear and much debated.

Some historians trace the sport back to the Roman game of 'paganica', in which participants used a bent stick to hit a stuffed leather ball. Others cite 'chuiwan', (which means striking and 'wan' meaning small ball), a Chinese game played between the 8th and 14th centuries, for the origins of the sport.

To many golfers, the 'Old Course' at St. Andrews, a links course dating to before 1574, is considered to be a site of 'pilgrimage'.

R. L. ROOFING CONTRACTORS

For ALL Your Roofing Repairs

From Just One Tile to a Brand New Roof

Give US a Call Today!!

*Reductions for Senior Citizens
Free Quotations upon Request*

Telephone: **01623 746694**

Mobile: **07887 940616**

G	L	E	H	C	S	R	O	H	O	L	F	G
O	D	L	F	G	S	A	M	O	H	T	O	L
R	E	E	D	F	B	H	G	O	M	L	F	G
O	C	L	F	G	E	M	C	L	L	R	O	Y
O	H	K	L	F	R	E	N	G	L	I	S	H
G	A	C	O	L	G	F	G	O	H	L	F	G
O	M	I	E	L	E	F	F	U	A	H	C	S
D	B	R	L	F	R	G	O	L	T	F	A	G
N	E	T	Y	E	S	A	C	O	T	D	N	L
A	A	A	F	G	O	L	F	N	O	O	T	N
L	U	P	U	A	N	I	F	O	N	O	L	O
V	G	Z	O	K	L	F	G	S	O	W	E	S
O	L	T	F	P	H	O	L	P	F	T	Y	N
H	G	I	O	E	M	I	G	M	O	S	L	H
F	G	F	O	O	L	F	G	I	O	E	L	O
M	O	R	I	K	A	W	A	S	G	W	O	J

The oldest surviving rules of the game were compiled in March of 1744 for the 'Company of Gentlemen Golfers'. The world's oldest golf tournament, is the Open Championship, which was first played on 17th October 1860 at the Prestwick Golf Club in Ayrshire, Scotland.

WARSOP COMPUTERS

32 High Street, Warsop
(opposite the 'Wine Bar')

Selling Computer Hardware, Accessories & Consumables

Compatible Epson inks from as little as £1 per Cartridge

Computer & Lap Top Repair and Servicing - Virus & Malware Removal

Open Monday to Saturday 9.30am to 5.00pm (close 1.00pm on Wed & Sat)

Telephone: 01623 847447 for details or friendly professional advice

CALL CENTRE
FREE ZONE

BUCKINGHAM INSURANCE

CALL CENTRE
FREE ZONE

Personal Service – Experienced Staff

Deals with all major Insurance companies - Flexible payment terms
All major credit cards - Free parking - Competitive rates - Wide range of Insurance available.

ALL types of Insurance at a price you can afford.

I, The Green, Clowne – 01246 570600

CHAIRMAN'S REPORT



Numbers of people across the country suffering from Covid-19 have been declining at a steady pace over the past few weeks (when writing this), and with the success of the vaccination roll out, we can only hope that the severities of Covid-19 are well and truly behind us, and I

hope that you all have remained safe during these worrying times.

Yes, some kind of **'self restriction'** may become the new **'norm'** for many of us, but hopefully some time in the very near future our lives can all return to a pre-covid existence.

As you will be aware of the Village Hall was used as a **'testing centre'** for Bolsover District residents throughout January and February and the Leisure Centre is a designated **'vaccination centre'** for at least until the end of August.

The government have surpassed their initial targets of vaccinating the first groups in the national vaccination programme and at the time of writing this everyone over the age of 50 and those who are clinically vulnerable have been invited for vaccination. To date more than 30million people in the UK have received their first dose.

As a **Town Council**, adhering to all governmental guidelines, all of our regular community events had to be cancelled last year. Unfortunately, the same rulings have forced us to cancel this years events until at least the Autumn, and even those being planned for may be affected by any future government restrictions.

Our annual Town Show and summer day trips are all cancelled. However we are hoping to reinstate the Car Show in late September early October and our Fireworks Display in November.

Preparations for our Christmas festivities and events and for next year's Town Show are underway, but again these will have to all adhere to any governmental restrictions imposed.

With the Leisure Centre being used as a vaccination centre we have moved some of our equipment up to the Village Hall, and from April 12th there will be limited activities and classes at the Village Hall. These sessions / classes **MUST** be booked beforehand as places **WILL** be limited.

Despite the fact that we are supposed to be under rules of restricted gatherings we are seeing the effects of groups of teenagers and youths gathering together on our parks.

We all know that teenagers can be teenagers and that they too will be suffering from their life's being changed from the **'norm'** due to Covid, but some of their actions and the damage that some of them are inflicting **CANNOT** be tolerated !!

W. ROSSITER ROOFING

All Types of Roofing Work Undertaken
Slating & Tiling - Flat Roofs - Lead Work
Re-Pointing - Fascias & Soffits

ALL WORK FULLY GUARANTEED - Over 25 Years Experience

Phone: 01623 747907 - 07977 922051

We are having almost daily reports of damage to the children's play area on the Town Park. The



safety flooring is constantly being ripped up and as soon as it's repaired it's attacked again. This is costing us, the tax payer money, and as a Council we will not give in to these mindless individuals.

We are also having daily reports of mass congregating around the Leisure Centre, climbing over the fence of the outdoor pitch to play football, jumping in the fishing pond and leaving litter, bottles and rubbish all over the place. These problems have been reported to the Police and we would ask you to help us by reporting all anti-social behaviour.

On a more serious note, I would like to report the theft of the defibrillator on the outside wall of the Town Hall.



Over the weekend of March 13th/14th, the casing of the defibrillator unit was ripped open and the defibrillator itself was stolen. It's a little ironic that the label inside the casing reads: **'Please return defibrillator to this cabinet after use'**. But as of yet the perpetrators have not returned it.

These defibrillators are installed to help save someone's lives. Do the individuals who stole it realise it could be someone in their very own family that could have their life saved by the use of a locally sited defibrillator unit.

Again we would ask for the help. If you know anything about this theft please inform us or the Police !!

As I say at the beginning of this report, numbers of people suffering from Covid are dropping, and the vaccination programme is rolling out successfully. But we shouldn't rest on our laurels and think that Covid has finally been beaten.

Other countries are seeing an increase in numbers and entering further lockdowns. We all must respect government guidelines and restrictions and together we can all enjoy a future where Covid is controllable !!

Chris Kane - Chairman STC

SHIREBROOK TOWN COUNCIL

209 Station Road, Shirebrook

Opening Hours:

Monday to Friday 9.00am to 1.00pm

**For ALL Enquiries regarding:
CEMETERY, ALLOTMENTS,
PLAYING FIELDS
& COUNCIL AMENITIES
(within the Parish of Shirebrook)**

Call in the Office or

Telephone: 01623 742475

Out of hours emergency contacts are:

07442 535020 - 07760 628548

SHIREBROOK VILLAGE HALL

Available for all functions including:

**WEDDINGS, BIRTHDAYS,
ANNIVERSARIES,
CHRISTENINGS, SOCIAL GROUPS
& ORGANISATIONS**

**Kitchen Facilities
& Exclusive Bar available.**

Call in the Office or

Telephone: 01623 742475

SHIREBROOK LEISURE CENTRE

Opening Hours:

Monday to Friday 7.00am to 10.00pm

Saturday & Sunday 8.00am to 6.00pm

Fully Equipped

Modern Leisure Centre

Also Available for Private Functions

Telephone: 01623 748313

SHIREBROOK MARKET

Tuesday, Wednesday,

Friday & Saturday

Specialty Events throughout the year.

Telephone: 07423 458872

To book a stall or general enquiry.



J S MOTORS



Unit 2, Eastview Industrial Estate, Langwith Junction

MOT's ONLY £40 - FREE RETESTS

Servicing - MOT's - Repairs - Tyres & Tracking

Telephone: 01623 742635 Facebook JS Motors

*We pride ourselves on being your fast and friendly,
no frills local independent garage, providing this service to you since 1990.*

Councillor DALE'S DIARY

Hello Readers,

It's so good to be writing for the Post again and keeping in contact making sure you're up to date with local news and information.

I've been Shadow Cabinet Member for Adult Care at Derbyshire County Council for the past four years. Its annual budget is £262million per annum.



During the pandemic those working in adult care from management to front line care workers in the Councils Residential homes, Care homes and home care services have been extremely professional, caring and flexible.

Our Care workers in Adult Care have not only been squeezed financially but burdened with the stressful working conditions caused by Covid over the past year. ***They have been magnificent working in an impossibly difficult set of circumstances in our communities.***

My heartfelt thanks goes to those working to care for and protect our most vulnerable residents in residential homes, care homes and home care services in Derbyshire.

I hope that any future proposed Council Plan for Adult Care would alleviate the stresses and strains of our dedicated workforce and raise the profile of

the front line care workers by improving their working conditions and increasing wages in line with the living wage and recognising the valuable contribution they make in our society.

I would also wish to see investment in more Council jobs in Care, providing opportunities for training and apprenticeships. Continuing to maintain and improve our existing residential homes building new Council care homes as needed and extra care homes for independent living to meet the needs of our fast growing elderly population.

In just under twenty years 1 in 4 of the population will be over 65years old and requiring at some stage support from adult care services.

I believe the Council has an essential role to play in adult social care and should be expanding in this area in operating residential homes and providing both short and long term home care services for independent living.

Currently there are 55 independent sector businesses involved in long term home care services looking after 4,000 residents in Derbyshire. It is forecast nationally that there will be an increase of 18% of elderly residents wishing to live independently at home and a 43% rise in those with learning disabilities living at home as specialist homes close, consequently there will be greater demand for long term home care services

It is important that our residents have choice and that it's not just led purely by the private sector

JADE HAIR @ HOME

Why not have your Stylist come to you at your home ?

Dry Cuts from only £4.00 to £6.50, Blow Dry - £7.00

Cut & Blow Dry - £12.00, Perms from £25.00, Colours from £22.00

WHY NOT GIVE US A CALL TODAY !!

TELEPHONE: 01623 747850 or 07867 585250

FULLY QUALIFIED FOR 'REAL' HAIR EXTENSIONS !!

who are there to make a profit. Council services are not motivated by profit they are democratically accountable 24/7 to our constituents through elected members, and they abide closely to the statutory legislation to ensure our vulnerable residents are kept safe.

During the Pandemic the County Councils Adult Care department in Derbyshire went further than the initial guidance from the government to protect our vulnerable residents and in doing so saved many more lives in Council run residential homes than the private sector were able to achieve under the governments standard guidance.

In financially difficult times private companies have to run on a shoe string and this can affect the quality of service they are able to provide for their elderly residents.

Highway matters: Pot holes are the bane of all our lives ! They are a symptom of a damaged or worn out road/footway. When the road surface has reached the end of its life a structural maintenance scheme is necessary.

These schemes involve the removal of old material and the replacement of the road surface and its foundations. We've all experienced temporary patching of holes in the road which fall out after heavy rains and have to be reported and patched again. ***This is not sustainable and a complete waste of public funding, after all it's our hard earned money that provides the service in the first place.***

Highways recently have repaired our potholes by just infilling the holes instead of carefully cutting out the damaged part then patching and sealing. Subsequently the infill is falling out as weather conditions deteriorate producing debris on the roads and paths, and might I say extra work for other local authorities to clear up the debris and make the road and footpaths safe. ***One might say its money down the drain !!***

It might have been better value for the Highways Authority to have invested initially in a programme of preventative maintenance preserving the life of our roads in a reasonable condition and structural maintenance schemes which involve the renewal of the carriageway were it is worn. The use of the public highways has grown but sadly government investment since 2010 into local infrastructure has fallen far short of what is reasonably required to meet today's needs.

I recently pointed out the problem of temporary patching at the last full Council meeting to the Cabinet Member for Highways citing as an example Church Drive in Shirebrook and likened it to a sieve because of the numerous potholes over its surface. A section of road on Church Drive was resurfaced just over a decade ago following the

CASTLE CARPETS

(SHIREBROOK) LTD.
65-67 Main Street, Shirebrook.

FAMILY RUN BUSINESS

Established since 1960

Telephone: 01623 743619

**Large Stocks of:
CARPETS & VINYL
From ONLY £6sq/mt
(Cash & Carry)**

**We have Special Offers
for FULL HOUSE Deals
&**

**We offer a Full Fitting Service
on Products bought from us.**

**Supplying ALL Brands of Carpets
from Plains to Patterns.
AXMINSTERS - WILTONS
SOFT SAXONYS
& LUXURY TWISTS.**

**We Supply & Fit LVT Products
including MODULEO.
ONE of the BEST Luxury Vinyl Tile
on the market today !!**

**At the moment we are running an
'appointment system' ONLY, so please
give us a call to book your appointment
to choose your new flooring.**

**We are also working within the govern-
ment's guidelines with regard to the
safety and wellbeing of our customers
and staff.**

WE ARE OPEN:

**Mon, Tues, Thurs & Fri 9.00am to
5.00pm Wednesday 9.00am to 1.00pm
And Saturday 9.00am to 4.00pm**

A.W. LYMN

The Family Funeral Service

Owned & managed by the Lymn Rose Family

www.lymn.co.uk  /awlymn  /awlymn  /a.w.lymn

"Our family serving your family since 1907"

For more information about our pre-paid funeral plans please telephone or call into the office.

- Rolls-Royce fleet
- Help with DWP claims
- Finance terms available

Shirebrook

32-34 Patchwork Row, Shirebrook, NG20 8AL

01623 742 813

- Mansfield 01623 622 116 • Mansfield Woodhouse 01623 623 765
- Ollerton 01623 860 045 • Sutton-in-Ashfield 01623 980 080

housing development but since it has rapidly deteriorated.

The Highways Authority regularly carry out temporary pothole repairs to this road. A few weeks ago it took the District Council two days to clear up the debris on the road and pavement from the fallout from the potholes following heavy rains.

The road is completely worn out in sections and I requested the damaged parts be resurfaced and the response from highways was that they would carry out yet more pothole repairs which was totally unacceptable as the road is beyond repair.

I pointed out to the Cabinet Member for highways this was a waste of public money on something that was unsustainable.

I've reported the flooding on Acreage Lane numerous times over the past years it has been a problem area for some time as a result of broken drains. I'm pleased to report that the drains are now repaired and the road has been resurfaced over that damaged section.

Shirebrook Miner's Memorial Fund has now raised £100,000 from cash donated by former miners and their families. What fantastic news and a fabulous achievement for the fund raisers to raise that amount in so short a time.

I received in January an additional £1,000 leadership grant and the following projects received funding:

£300 to BLAST to sponsor 10 children from disadvantaged families to go on a six week bike maintenance course. The child builds a bike under expert tuition and learns about maintenance and then gets to take the bike home at the end of the course.

£200 to BLAST to mentor volunteer youth workers at New Houghton Community Hub to start a youth club and to support volunteers to set up and run a community shop.

£300 for a therapeutic art project for local teenagers assisted by West Notts College Art department to produce art work with a positive message to adorn bare walls at vaccination centres, test and trace centres and doctors surgeries.

£200 to Carter Lane Parents and Carers learning disability group to support outdoor activities and trips after lockdown restrictions have been eased following long periods of social isolation.

It has been a great honour and privilege to serve you and to fight on your behalf for the past four years, and to be able to donate to so many worthwhile community projects helping to improve people's quality of life.

I am humbled and honoured by the support you have shown me and with your support I would like to continue as your County Councillor. Thank you, until we meet again

Christine Dale - 07811 995612



Every MONDAY

Turner Hall, Mansfield Woodhouse - Consultant LEE - 07462 669000

Every WEDNESDAY

Shirebrook Holy Trinity Church Hall - Consultant GEMMA - 07950 900413

Warsop Parish Church (Tudor Barn) - Consultant VANESSA - 07889 877155

Every THURSDAY

The Focus Point, Vale Road, Mansfield Woodhouse - Consultant SUE - 07775 780458

The Oaklands Centre, Warsop - Consultant SUE - 07775 780458

Every SATURDAY

The Focus Point, Vale Road, Mansfield Woodhouse - Consultant WRAY - 07525 005942

The Towers, Botany Avenue, Mansfield - Consultant TESSA - 07798 765623

BOOKING IS ESSENTIAL !! Please call Consultant for more details.



PROPOSED COUNCIL PROPERTIES

As part of Bolsover District Council's scheme to build 400 new Council properties over the next four years, both Shirebrook and Langwith could be beneficiaries.

The former recreation ground (paddler) next to the Lidl store has previously been talked of being available for retail, but over the past five or six years there hasn't been any definitive interest, and over the past year, with the Covid pandemic, things have definitely changed.

Retail investment that was once a possibility has now become very difficult for places like Shirebrook, but one thing that has not changed, is the demand for more 'retirement' properties for our growing population.

Proposals for 26 such dwellings for the site are being drawn up and discussed ready for submission for planning.

Also in the area, across the road at Hereward Close, the former garage site is being measured up for three or four similar bungalows.

Garage sites across the District are becoming less and less used for the purpose they were designed for and some are becoming run down and even used for some anti-social activities.

These bungalows would be different from the traditional bungalows and will be designed and built for 21st century living.

District Leader Steve Fritchley has said: *"These bungalows will offer purpose built, modern and energy efficient homes that we are sure will appeal to those that want to stay in their Villages and Towns and are looking to plan for older age or move out of the family home because it's too large and expensive to run.*

"These properties will ease our waiting list further and go towards our promise to build 100 high quality, sustainable properties per year over the next four years in Bolsover District."

Steve went on to say: *"As I have reported*

in past issues of the 'Post' and elsewhere, the District Council have been identifying potential building plots throughout the area for a number of years and other sites in Shirebrook could also be potential development sites in the near future.

"Areas like the former site of Alder House, which was demolished a few years ago now, and perhaps the garage site at the bottom of Pear Tree Drive.

"If developed right this site could produce a



number of bungalows and give easier access to the rear of the properties on Recreation Road at the same time."

And, in Langwith, three sites have been suggested. The first and the largest development is on the Woodlands, opposite East View, on the land locally known as the 'whispering wood'.

Proposals for this site would see one four bedroom detached house, four three bed semi-detached house, eight two bed semi-detached houses, four one bed semi-detached houses and two two bed semi-detached bungalows. In all, 19 new properties.

Smaller developments have been proposed on: West Street with two one bed bungalows and a further two bed bungalows following the completion of a land sale, and on Moorfield Lane with three or four two bed bungalows, depending on the design.

Sandra Peake, District Councillor for Langwith and Cabinet Member for Housing at Bolsover District Council, said: "We know there is a real demand for these types of properties in Whaley Thorns and the council are really excited to be delivering this scheme.

"A lot of parishioners have, on numerous occasions, bemoaned the fact that they have to leave our Parish especially for elderly accommodation. We feel that they should have more of an opportunity and choice to stay in the village.

"We also hope that these new council properties will be the first of many to be built in the vicinity."



As our readers and local residents will already be aware of, Ashbourne Court in Shirebrook is currently going through a refurbishment programme by Bolsover District Council.

As part of the 'Safe & Warm Scheme', the units are being modernised and reshaped and individual heating systems are also being installed.

Ashbourne Court is much in demand because of its central location, and the site could also offer a potential future expansion programme.

SHIREBROOK

D.I.Y.

HOME & GARDEN

82 - 86 Market Street, NG20 8AD

**NO NEED TO GO OUT OF
TOWN FOR YOUR D.I.Y.
OR DECORATING PRODUCTS.**

WIDE RANGE OF:

**Paints, Wallpaper
& Other Decorating Equipment
Small & Large Hand / Power Tools**

**Small Domestic
& Household Goods**

**Timber, Plaster Board
& Other Building Materials**

**Ironmongery
(Including Locks & Latches)
Internal & External Plumbing
(From Taps to Down Pipes & Guttering)**

**Gardening Equipment
Feed & Compost**

Key Cutting Service Available

ALL

at Fantastic & Affordable Prices !!

**PAY US A VISIT
YOU WON'T BE DISSAPPOINTED !!
WE ARE OPEN 6 DAYS A WEEK
Mon to Fri 8.00am to 4.30pm
Saturday 8.00am to 4.00pm**

Telephone: 01623 742812

**STOCKISTS OF:
'QUICK STEP FLOORING'
& 'TILE EFFECT BOARDING'
LOCAL DELIVERY AVAILABLE
CALOR GAS STOCKISTS**

SHIREBROOK TOWN FOOTBALL CLUB

*All Home Fixtures are played at
the Langwith Road Ground,
Langwith Road, NG20 8TF.*



The new year came with every local footballing fan's worst nightmare, the cancelling of all football below the National League leagues, and an end to Shirebrook Town's 2020 /21 season.

As we come through the government's '**roadmap out of lockdown**', and the return of some fans at trials in the very new future, the only thing we can hope for is the return of competitive football for the start of the 2021/22 season.

If all goes to plan, the new season can kick off and welcome fans back through the turnstiles. Until then, we can report that Town are looking at entering a 'Derbyshire Cup' competition to be held during June and July, and that Shirebrook Town have applied for entry for the FA Cup, the FA Vase and the FA Junior Cup for next season.

For confirmation of future fixtures either telephone: **07983 809608** (Aimee Radford, Club Secretary) or log onto eastmidlandscountiesleague.pitchero.com

NOT JUST OUR PROBLEM !!

The problems with pot holes on our roads is an annual event, but we're not on our own !!

The 'Asphalt Industry Alliance' has recently reported that the number of pot-holes across England and Wales has increased by 200,000 to almost 1.7million during the past year. The total spend by local authorities on filling pot-holes in 2020-21 was £93.6million, equating to one being fixed every 19 seconds.

***These numbers are not the worst recorded !!
In 2014-15, the number was as high as
2.7million !!***

The Local Government Association, which represents councils in England, has called for a £10billion package to brings roads '**up to scratch**', but the Department for Industry have stated that the government is providing only £2.5 billion in funding over five years to help councils improve their roads. A massive discrepancy !!

There was a little positive news though. The survey also found that the proportion of council maintained roads in England deemed to be in a '**poor**' state, fell from 21% in 2019-20 to 16% this year.

The biggest problem we have, and we've reported it on numerous occasions, is the quality of repair !! There needs to be a combined effort by all involved to come up with a better system, because as we all know, there isn't a bottomless pit of cash to re-surface all of our roads !!

MAIN STREET - HIGH STREET

The 'High Street' in many towns and cities throughout the UK are predicted to suffer in the immediate post-covid era, and many where investment was hoped to help regenerate may be in abeyance for years to come.

But some areas, Shirebrook being one, have been through crisis before and they have come out the other side. We have reported in previous issues of the changing times, in particular, of Shirebrook's 'shopping centre' and 'former' high street, and thought you would like this little bit of history.

Some of our oldest businesses in Shirebrook are still in the area: Castle Carpets, Flints and Ashleys.

Do you remember the 'Dot' shop where kids could get their choice of boiled sweets, sherbets and chocolate. What about the 'Sports Supply' shop down from Flints. A long time before the likes of Sports World hit our high streets

Pictured are the former 'Roxy' building, later the 'Silver Saver' and at the junction of Patchwork Row, the former branch of the 'Pleasley and Pleasley Hill & District Co-operative Society.



Did you know that there was once a Post Office at the junction of Flash Hill (Division Road) and Main Street ?

One good thing to come out recently, as regards places like Shirebrook, following the Covid pandemic, is that shoppers may be inclined to shop 'local' in the future.

So, much like in the past, obstacles pop up and changes are a certainty, but with a strong community and a united front, the future is assured !!

From the junction of Byron Street, down Main Street and turning onto Patchwork Row (when the Market Square was mainly residential) we had a thriving 'high street' in Shirebrook that catered for everyone's daily and living needs.

From furniture, electrical goods, clothing, your pharmaceutical needs, meat, daily bread and groceries. You could even get a haircut !! Throw in the pubs, (Northern & Gate), the odd cinema and dance hall and you didn't have far to go to enjoy yourself when not at work. *Oh, what a wonderful time it must have been !!*



Registered Mobile Foot Health Practitioner

Home Visit appointments for Foot & Nail Care

Services include: Regular Care & Maintenance of Nails & Skin.

Treatment of Corns & Calluses. Advice & Treatment for Nail & Skin conditions including: Athletes Foot, Fungal Nail, Verrucas, In-growing Toe Nails

JEAN BROOKS RGN BSc (hons) S.A.C Dip. RFHP

with 37 years experience as a Registered Healthcare Professional

Call TODAY on: 07743 260307 for appointment or general enquiries.

Manicure, Gel & Acrylic treatments, Medicated Nail Polishes also available.

01623 844539 or 07811 151594

SHIREBROOK & CLOWNE CHIROPRACTIC

Relieving pain since 1998

Back, Neck and Joints Acupuncture, Manipulation, Rehabilitation, Sports Injuries.

Mr Lee Goodwin BPHE Dc Doctor of Chiropractic, Acupuncturist.

Shirebrook Business Centre
Station Road, Shirebrook, NG20 8SX
01623 742028

Springs Health Centre
Recreation Close, Clowne, S43 4PL
01246 511668



British
Chiropractic
Association

For more information visit:
www.goodwinclinics.com



General
Chiropractic
Council

RHUBARB FARM, LANGWITH

They're always busy down on the Farm, and when Covid-19 restrictions are finally lifted they will be ready to welcome back friends old and new !!



Rhubarb Farm has had a brilliant March !! With a brand new yard and path, the Farm has a fresh vibrant feel to the place, all ready for opening up as Covid restrictions are lifted.

Funding for the face lift was secured from Nottingham County Council and Killingley, who also supplied men, plant and time to carry out the works.

Our volunteers are lined up to return throughout April and May, we truly can't wait for the whole team to be reunited again !!

At present, we are hoping to welcome new volunteers from June 21st. This is also the date when we hope to be able to open our gates for classes



and activities to the public. ***They're definitely looking forward to a summer of fun, sun and the Farm Café !!***

The Farm shop is currently closed and 'Veg bags' are currently unavailable, but they still have eggs, honey, and a limited jams and chutneys for sale.

Once the veg has come through and ready for harvesting the veg bag scheme will be up and running once again. For more details contact the Farm on 01623 741210.

As readers may already be aware, the decision to cancel the annual Show, for a second year, has unfortunately already be made.



Exclusiv

UNISEX HAIR & BEAUTY SALON

16 King Edward Street, Shirebrook

Ladies, Gents & Children Welcome.

From Dry Cuts & Blow Dries to Colouring, Perms & Extensions.

All carried out by professional Stylists

Telephone: **01623 740077**

For more details or to book an appointment.

Government guidelines will be adhered to during the Covid 19 pandemic.



DID YOU KNOW !!

In 1874 land was purchased from the Duke of Devonshire, and by 1876 the 'Maltings' was erected next to the railway line. *They, like the Colliery Company, had been waiting for the railway line to be built.*

William Burkitt was a Chesterfield man who came from a family of Maltsters but had branched off into the exporting of grain using his own ships based at King's Lynn. The area produced good barley, had an ample water supply and a railway, so it was a good reason to build a malting nearby.

The building designed by S. Rollinson of Chesterfield, was some 201 feet long and 88 feet wide. It had three floors, two for growing and one at the top for the storage of malt. There were three kilns to make the malt and a barley-drying kiln. *All were fired by Welsh Anthracite which was much cleaner than the local coal.*

Twelve houses were built for the staff, together with a manager's house, at the same time as the Maltings. This was followed some thirty years later with a block of four and a bungalow. All were solely for the employees until 1949.

Peach & Co. of Burton-on-Trent leased the Maltings from 1923 to 1928 for an annual rent of £725, and in 1935 bought the site for £4,382. The Maltings continued production up to 1986 then shut due to a glut of malt.

Malting started again on site from 1989 to 1991, and the buildings were also used to store barley. The site was put up for sale and the buildings were 'listed' in 1992, but by 1997 the buildings had been vandalised to such a degree that they had to be demolished.

A History of Langwith, Nether Langwith & Whaley Thorns by Tony Warriner

DEVONSHIRE CHARITY

The Devonshire Charity, which has been running for many years, was established to assist young people in education, primarily in the parish of Upper Langwith, but it is able to extend its assistance to young people living in neighbouring Langwith and Shirebrook.

There are financial grants available to support young people in the pursuit of a career, and the Charity's trustees are anxious that the money be used for this purpose.

So, if you are aged between 16 & 25, are in part-time or full-time education, or even training in a work environment and are looking for a little financial assistance, then contact Jeni via email upperlangwithdevonshirecharity@hotmail.co.uk

MATT THOMPSON T/A LANGWITH GARAGE

CAR SALES

Main Road, Langwith, NG20 9BH

QUALITY CARS at QUALITY PRICES

2015 Corsa (48k) £3,750 **2014 Focus Diesel (106k) £3,650**

2006 Kia Picanto ONLY £495

2013 Corsa SXI (49k) £3,750 **2001 Hyundai Atos ONLY £495**

2009 Ford Focus Diesel £1,250 **2009 Nissan Micra (112k) £1,450**

2013 Transit MWB £4,750 **2014 Corsa (36k) £3,250**

2012 Transit Connect £3,250

2006 Focus Diesel (75k) £995 **2013 Corsa (51k) £2,250**

**STOCK CONSTANTLY CHANGING !!
ALL VEHICLES COME WITH MOT AND
WILL BE VALETED BEFORE THEY
LEAVE THE SITE.**

**We also offer a Recovery Service and Vehicle
Collection & Delivery Service anywhere in**

the UK Call: 07399 020699

**M.O.T. Failures
WANTED for CASH !!
CARS - VANS
4x4's - MOTORBIKES
Best Prices Paid !!**



FENCING & LANDSCAPING

Unit 1 & 2, Vernon Street, Shirebrook

Specialists in:

Complete Garden Renovations

(All rubbish removed from site)

Decking - Patios

Home & Security Fences

Metal & Wooden Fencing

Artificial & Real Lawns

We also Supply:

Fencing Panels & Posts

Concrete Posts & Plinths

Metal Railings

ALL Made to Order !!

INSTALLATION SERVICE

ALSO AVAILABLE.

FREE NO OBLIGATION QUOTES.

The Company carries

Public Liability and Employers Insurance.

(Documents are produced during estimates).

GIVE US A CALL TODAY !!

MARC on: 07800 733701

LEE on: 07544 058793

lmfencing@outlook.com

**See our Facebook page to see quality
of workmanship.**

Local Family Run Business

WE ARE HERE TO HELP YOU !!

WHY NOT GIVE US

A CALL TODAY !!

**OPERATOR & MINI DIGGER
AVAILABLE FOR HIRE.**

COLD CALLING

Have you ever been disturbed whilst watching your favourite programme, eating a meal or simply trying to have a doze by an unexpected telephone call ? If you have, there's a big chance its been a 'cold call'. **But what is 'cold calling' ?**

Cold calling is a technique in which a salesperson contacts individuals who have **NOT** previously expressed interest in the offered products or services. Cold calling typically refers to solicitation by phone or telemarketing, but can also involve in-person visits, such as door-to-door salespeople.

Cold calling is **NOT** illegal per se. However, the Privacy and Electronic Communications Regulations 2003 imposes restrictions on marketing via cold calls and unsolicited texts, emails and faxes. The 2003 Regulations require companies to obtain an individuals consent before sending marketing communications to them.

The 2003 Regulations prohibits the use of live cold calls where: The individual has made it clear they do not wish to receive such calls, **or** The recipient's number is listed in the Telephone Preference Service register.

The Telephone Preference Service (TPS) is a central '**opt out**' register where individuals can register their wish **NOT** to receive unsolicited sales and marketing telephone calls. Companies are **BANNED** from contacting telephone numbers registered with the TPS.

If you want to '**opt out**' from receiving unsolicited calls why not visit the Telephone Preference Service website at **www.tpsonline.org.uk** It's free and quick to register a telephone number.

WHAT YOU SHOULD NEVER DO !! The most important thing **NOT** to do if you answer any dubious calls is to give your full bank details, passwords, settings or PIN numbers. A bank or any reputable caller will **NEVER** ask you for this !!

It only takes the slightest information for 'scammers' to be able to get access to your internet or to your bank account. If in doubt of any call HANG UP !!

SALLY'S Cleaning Services

Reliable , Local and Professional Cleaning Service

Regular Household Cleaning

Deep Cleaning - One-off Cleans

Cleans for and after Special Events

End of Tenancy Cleans

Please call: 07715 915075

for a FREE quote

Email : sallybrewin@rocketmail.com

**MADE REDUNDANT ?
LOST YOUR JOB ?
NEED HELP ?**

At some point it is likely the Chancellor will announce an end to the furlough scheme. The present scheme that has been extended a number of times is due to finish at the end of September.

This scheme has been a lifeline for many workers during the pandemic. When this financial support comes to an end it is expected that unemployment will rocket with businesses trimming their workforce and others going under.

It is hoped that the decisions made regarding the furlough will allow firms to adjust to the new circumstances and help with rebuilding of our hard hit economy. *However, we must be ready for all eventualities.*

Since 1993 Derbyshire Unemployed Workers Centres (DUWC) have been helping people in the Shirebrook area.

Due to the virus and the economic downturn many people are on the verge of losing their jobs or are already having to claim universal credit.

"Don't face your problems alone." said Andy Parkes who has been advising people in Shirebrook for over a decade. **"Get in touch, via phone or through our website, and we will make sure you are getting all to which you are entitled."**



Are you over state pension age?

Have you had a health condition for at least 6 months (and still diagnosed with it)?

If you are not currently claiming Disability Living Allowance or Personal Independence Payment you may be entitled to Attendance Allowance

Remember: Attendance Allowance is not means tested, nor affected by income or savings.



Derbyshire Unemployed Workers' Centres
Call 01623 748161 weekdays 8am - 4pm
or visit www.duwc.org.uk

**Don't face your problems alone.
We can help with...**



We can send you a copy of our guide or pick one up from the Shirebrook Co-op



Derbyshire Unemployed Workers' Centres
Call 01623 748161 weekdays 8am - 4pm
or visit www.duwc.org.uk

DUWC has just published a guide to benefits and credits following redundancy outlining all you need to know when faced with unemployment. **The guide is free and can be found at the check-outs in Shirebrook Co-op.**

Although closed at the present time for 'face-to-face' enquiries, DUWC advisers will find a way to help you through your problems.

DUWC works closely with the Derbyshire Law Centre and having decades of experience can signpost you to complimentary organisations if we cannot help you ourselves.

"It's a shot to nothing to check out that you are getting the right amount of benefit." said Andy.

"Check out our new mobile phone friendly website www.duwc.org.uk. All the staff at DUWC have at sometime experienced unemployment so they know what you are going through and are keen for you to benefit from their expertise and experience."

DERBYSHIRE UNEMPLOYED WORKERS CENTRE

Patchwork Row, Shirebrook

Telephone: **01623 748161**

Monday to Friday 8am to 4pm

or visit **www.duwc.org.uk**

Helping the people of Shirebrook and District since 1993.



F. R. MOTORS

Unit 6, Kettle's Yard, Langwith Junction, NG20 9RN



**Complete Engine Replacements,
Welding - General Repairs - Clutches - Gear Boxes
and all M.O.T. & Mechanical Repairs**

Telephone: 07375 608576 / 07375 608577

Unit 6, Kettle's Yard, Langwith Junction, NG20 9RN

LANGWITH PARISH COUNCIL

Chairman's Report



"It's been a very troubling time for most of us over the past twelve months or so, but with numbers being affected by Covid rapidly reducing and the success of the vaccination programme, there is hope around the corner !"

"As a Council we were unable to host any of our regular events in 2020 but we were able to deliver a little festive cheer at Christmas.

"We were able to organize and deliver around sixty Christmas meals, and a small gift, to some of our more senior citizens. Lemon Tree Café prepared the meals for us and we have received many wonderful and pleasing comments from residents. Father Christmas was also on hand to deliver a selection box and some fruit to each child that attends our local Primary Schools.

"We also delivered some 'goodies' hampers to staff in our local care homes, in appreciation to their dedication and continued hard work looking after some of our most vulnerable loved ones throughout these unprecedented and difficult times.

"The workforce have continued with their

normal duties and have been busy decorating, repairing and carrying out general maintenance on our properties. With Spring now upon us they will be even busier with grass cutting and with the upkeep of our 'planted areas' throughout our Parish.

"The most disappointing part throughout the pandemic, has been the suspension of our regular user groups at the village hall and community centre. For some this is the only regular contact they have with non-family members and we cant wait to welcome them back when guidelines allow.

"Some however may not feel safe to come back, but as a Council we will do our best to welcome them back and make their return as safe as humanly possible. ***I especially can't wait to see them again and the Village Hall awaits them !!***



SHEDS & BESPOKE SUMMER HOUSES

by LOCAL MANUFACTURER

Summer Houses & Sheds Built To Your Specifications

Corner Summer Houses with Double Doors & 2 Large Windows from ONLY £700 !!

WE ALSO BUILD: BENCHES, PLANTERS, PERGOLAS, KENNELS, HUTCHES, PLAY-HOUSES & TANALIZED FENCE PANELS.

WHY NOT ADD THAT 'EXTRA' ROOM IN YOUR GARDEN ? GIVE US A

CALL TODAY ! Call: 07729 795397 - Email : sandsshedsuk@gmail.com

ANY GENUINE 'LIKE FOR LIKE' QUOTE MATCHED - QUALITY NOT BEATEN !!



"We have no immediate news as to our regular events for the this year, we are totally reliant on government guidelines as to what and when we can put things on. **But as soon as we can, we will get something organized !!**

"It's also disappointing that I have to report the continued damage on our recreation grounds, and I would ask you please have a word with your children and if you see or hear of any culprits, please let us know !!

"On a more positive note, and on a District level, I am pleased to be able to report that we will hopefully be getting some new properties built in the Parish.

"As part of Bolsover District Council's scheme to build around 400 houses in the District, 31 new properties have been earmarked for the Whaley Thorns area, namely on The Woodlands, Moorfield Lane and West Street. These properties will be an excellent addition to our community.

"Let's all hope that this year is better than the last and that life can return to some kind of pre-lockdown normality soon."

Langwith Parish Chair - Sandra Peake

DON'T FORGET

when government Covid restrictions are lifted:

The Whaley Thorns & Langwith Village Hall on Portland Road will be available for Hire, once we get government guidance, from as little as £10 per hour.

It is a great venue for Family Parties, Weddings, Christenings and Funerals, with a seating capacity of 100. Kitchen facilities and a 'bottle' bar are also available in the Village Hall.

For Bookings call the Parish Council on 01623 74649, call in to the Village Hall, or visit our website www.langwithparishcouncil.gov.uk for an online booking form.

The Village Hall has regular groups that hold events on a weekly and monthly basis; a full calendar of events at the Village Hall is always available to view on the website.

DOWNTOEARTH

GARDEN & LANDSCAPING SERVICES

**Gardens Turned, Weeded &
Generally Tidied Up.**

Trees & Shrubs Trimmed or Removed.

DISCOUNTS FOR SENIOR CITIZENS

Call:

01623 847477 or 07940 038563

Helping you achieve a garden to be proud of !!

LANGWITH LODGE RESIDENTIAL HOME



24 Hour Care, Respite and Day Care.

All staff trained to the highest Standards in Social and Dementia Care.

Day time activities, day trips organised. All set in a peaceful, tranquil surroundings.

54 BEDROOMS

(Single, Double, En-Suite)

with views the lakes.

Referrals from: Derbyshire and Nottinghamshire County Council

At Langwith Lodge Residential Home we endeavour to give your loved one the care that they deserve.

**The Park, Nether Langwith,
Mansfield, Nottingham, NG20 9ES
www.yourhealthgroup.co.uk**

**Please call: 01623 742204
for further details.**



**Come and visit us at the home,
and see for yourself.
Our home is your home !!**

HEATWAVES

TANNING & BEAUTY STUDIO

2 Main Street, Shirebrook

HEATWAVES pride themselves on providing excellent customer service at **ALL** times.

HEATWAVES goal is to build a long lasting and trustworthy relationship with their clients.

TANNING PRICES

36 mins - £10.00

66 mins - £15.00

80 mins - £20.00

100 mins - £25.00

ALL new clients receive a **FREE** sachet of tanning cream.

HEATWAVES

Beauty & Skin Care Treatments

Facial - £20 Derma Pee - £20

Chemical Peel - £25

Oxygen Therapy - £40

Anti-Wrinkle Injections from £99

Lip Enhancement from £99

Eyebrow Wax or Tint - £5

Eyebrow Wax & Tint - £9

Eyelash Tint - £5 Lash Lift - £20

Other Treatments also Available

Call: 01623 232650

For appointments or information.

WE ARE HERE TO HELP !!

During the current Covid-19 pandemic some of our services may not be available. Government guidelines for Covid-19 will be adhered to at all times.

STOREHOUSE COMMUNITY SHOP NOW OPEN IN SHIREBROOK

A local Shirebrook food bank has now opened a new community shop in the Town thanks to £33,000 worth of grants from Bolsover District Council and Bolsover Partnership.

The grants have helped the centre transition from a food bank to a community shop where for a £5 minimum membership local people can obtain a large bag of food, of their choice, from the shop on site each week for a minimum donation of £5.

Bolsover District Council Leader, Councillor Steve Fritchley, who was invited along for the 'official' opening, said, "This is a great community project and one that we are delighted to have been able to support.

"The past twelve months have been very challenging for some and the Brook Centre has been at the heart of that challenge.

"Amanda and the team do a great job in helping those in need and this shop is a way for local families to invest in their community and reap the benefits of a sustainable way to access food and support beyond the pandemic."

For those who struggle to afford the donation or membership, a full support service is provided with an on-site provision from the Citizens Advice Bureau to help people access to benefits, housing and wellbeing services.

The grants have been provided by Bolsover District Council's Business Grant Scheme (£10k) and Bolsover Partnership's Public Health Locality Funding (£22k).

R & S LAWNMOWERS

Spring is now upon us. Mowers need looking over or sharpening ? Call:

R & S LAWNMOWERS.

**ALL LAWNMOWERS SHARPENED,
SERVICED & REPAIRED.**

FREE collection and Prompt Service

Telephone: 01623 842419

R & S LAWNMOWERS

Get TESTED when needed !!

Get VACCINATED when offered !!

**And. Please Remember,
Hands, Face, Space, Fresh Air !!**



HOLY TRINITY PARISH CHURCH

Church Drive, Shirebrook, NG20 8DE

Main Services: 1st & 3rd Sundays in Holy Trinity at 11.30am

Sundays Together every Sunday on Facebook at 8.30am

Team Rector: Rev. J. Draycott - Team Vicar: Rev. K. Bradley

Rev JOHN DRAYCOTT writes ...

I reckon when most of us think of Easter one of the very first things that comes to mind is 'eggs'. More than likely, they would be chocolate ones as well !!

The egg is to represent new life, but Easter is even more than that. Have you ever wondered what a chicken understands of the world outside its shell before it hatches, or even a baby while still in its mother's womb ?

They can't even begin to imagine the wonders of the world outside even if they are capable of thinking about it, but the enormity and wonder still exists even though they cannot imagine it.

Easter is about the Resurrection of Jesus; the fact that even beyond his death on the cross his followers became aware that Jesus still existed. He was still alive, the same and yet different !!

They were so profoundly aware of his presence, despite it being beyond all likelihood and understanding, that many of them were prepared to be escorted in front of religious and political leaders to give an account of their strange ramblings.

Other followers were even killed for believing such a thing, but they believed that there was something beyond the 'shell' or outside the womb and they were not shy about telling others.

In recent years there's been a saying "One life - live it !!" It tends to be on adverts to get you to buy a car. I'm not so sure that statement is absolutely true. I am convinced that life is bigger than just the human, physical bit we so easily see

I believe that life is part of something beyond our imagining which includes a life beyond death in what we refer to as a Spiritual form.

The promise of Easter is the promise of the Resurrection of Jesus; that death is not the end, but only the end of our physical lives.

Outside physical life is something we struggle to comprehend let alone imagine, the fullness of which we will only appreciate after we have 'hatched.'

A life in eternity in the full presence of God, a God who loves us and loves you so much he wants to spend forever with you. ***Now that is something to celebrate!***

When we have our chocolate egg the empty ones are to remind us of the empty tomb found on Easter Day.

The delicious taste when we eat the chocolate tells us that death was swallowed up in the resurrection of Jesus, the enjoyment we have from the taste of the chocolate speaks to us of how the new life Jesus brings is sweet and satisfying. ***Hope you enjoyed your chocolate Easter eggs. I'm really enjoyed mine !!***

CHOCOLATE – Food of the Gods !!

The botanical name for the cocoa bean is 'Theobroma' which means 'food of the gods.'

Millions of us agree – half a million tons of it are eaten in Britain each year alone, chocolate makes us feel better. The chemicals it contains trigger the release of endorphins similar to those we naturally produce when we fall in love.

But nutritionists warn against using chocolate as a pick-me-up, especially in the evening. Chocolate eaten before bedtime can cause blood glucose levels to plummet during the night, which will disrupt your sleep. Chocolate eaten in quantity every day can lead to mood and energy swings, weight gain and poor immunity.

But occasional consumption of cocoa can provide medical benefits. Chocolate containing 60 per cent or more cocoa solids is rich in essential trace elements and nutrients such as iron, calcium and potassium, and many vitamins. Cocoa is also the highest natural source of magnesium. Good as all this may be – most of us enjoy chocolate simply because of its high sugar and caffeine content. Chocolate simply gives you an instant sugar hit, providing a sudden burst in energy, unfortunately followed by a slump and the desire for another sugar-fix.

SMILE TIME

A parishioner was planning an Easter trip to the Holy Land and was aghast that it would cost her £50 an hour to rent a boat on the Sea of Galilee.

She protested to the travel agent who replied, "You have to take into account that the Sea of Galilee is water on which our Lord himself walked upon."

"Well, at £50 an hour for a boat," she replied, "I am not surprised !!"

KHTE

Building Services

15 Sherwood Street, Warsop,
Mansfield, Notts. NG20 0JP

BOILER SERVICE

from **ONLY £55**

We also offer a Service Plan starting from £25 per month which includes: Annual Boiler Service and repairs from a problem with your boiler to a leaking pipe, depending on the cover you take out. We also:

- Supply and fit boilers
- Issue Gas Safety Certificates
- Issue Landlord Certificates

WE ALSO PROVIDE THE FOLLOWING SERVICES

- All aspects of Plumbing Work
- New Windows and Doors
- Soffits and Fascias
- Landscaping
- Extensions
- All aspects of Electrical Work including Alarms and Lighting
- Painting and Decorating
- All aspects of Joinery Work including Bespoke Kitchens and Doors.

WE HAVE THE WHOLE PACKAGE !!

Contact us on: **01623 844002**

or Mobile: **07936 969886**

or E : MAIL

brian@khtebuildingservices.co.uk

Please feel free to visit our office (opposite Subway)



to see what other services are available.



BDC's WELLNESS PROGRAMME



Like many service providers up and down the country, BDC's Wellness Programme activities, due to government guidelines, have been suspended for the majority of the past twelve months or so.

However, we understand that a provisional date of **May 17th** has been set for the return of the Wellness Programme activities, initially at their Clowne location at first. **But what is the Bolsover Wellness Programme ?**

'Bolsover Wellness' is a long established health improvement programme covering the District of Bolsover that aims to increase participation levels in physical activity by extending access to a range of community based physical activity programmes for local people.

'Wellness' offers support to a wide range of target populations who are less likely to lead active lives, and may have a range of issues that impact on health and wellbeing. 'Active Confidence' is a key feature of the programme, which focuses on improving mental wellbeing through involvement in Physical Activity.

DO YOU QUALIFY ?

You are a potential candidate if you:

- * Have a Body Mass Index (BMI) lower than 19
- * Are vulnerable due to current circumstances
- * Struggle with long term unemployment
- * Are ex-military personnel
- * Have a disability
- * Are experiencing social isolation

To see if you qualify and you would like to get involved call: 01246 242361 or 07881 482150.

Alternatively if you live in Shirebrook or Langwith, why not phone the Shirebrook Leisure Centre on **01623 748313** and ask to talk to Archie Rowbotham, Exercise & Fitness Referral Officer, who delivers the **Wellness Programme** at the Centre.

MEET FRIENDS OLD & NEW AGAIN !!

Before the lockdowns we had numerous groups, who welcomed new members with open arms, operating in the area.

Women's Groups, Self Help Group, Friendship Club, Resident's Groups, Dance Groups, the Salvation Army and Church Groups and various groups and sessions at the Library on Patchwork Row. **As we get back to some kind of normality it would be good to get these groups to the levels we had before 'lockdown'.**

Why not give one of them a call. Contact details are available from your local Town / Parish Councils. **You will definitely be made welcome !!**



PAWS Pet Essentials



Family run business open seven days a week !!

Stocking: Food, Treats, Bedding, and Accessories for:

DOGS - CATS - SMALL ANIMALS - CAGED & WILD BIRDS - POULTRY

ALSO: RAW DOG FOOD - FISHING BAIT - POND FOOD - SHAVINGS

FIND US ON KETTLE'S YARD, LANGWITH JUNCTION

MONTHLY OFFERS - FREE LOCAL DELIVERY - PAY US A VISIT !!

Call: 01623 237757 or Find US on Facebook



VILLAGE HALL

Like every other facility of its kind the Village Hall on Park Road fell victim to the Covid-19 pandemic and remained closed for most of the time over the past year !!

January and February saw the Village Hall used as a 'testing centre', and hopefully, from April the 12th the Hall will be available for some of the activities normally held at the Leisure Centre, which is to remain a 'vaccination centre' until the end of August.

Included in the first phase, respecting all government guidelines, there will be fitness gym, gymnastics and martial arts sessions available. Gym Tots sessions will also be available from the 22nd. **ALL SESSIONS MUST BE BOOKED !!** These can be booked by calling the Leisure Centre number on **01623 748313**.

From the 17th of May some classes and exercises including chair based activities may be available depending on advice from the government.

Later in the year, if the timetabled lifting of restrictions continue, the Village Hall will once again be available for hire for parties and celebrations, including weddings.



From christenings to weddings and funerals, from club activities to school events, or family parties to social meetings, **the Village Hall can meet everyone's needs !!**

The meeting room can be hired for small gatherings and the whole hall, including full use of the kitchen can be hired for most occasions on an hourly or daily rate, at very competitive rates. Midweek, 'Meeting Rooms' are available from £7.50 per hour and the Hall from £13 per hour.

On a Friday, Saturday or Sunday the daily rate is only £100 (which includes use of all rooms and kitchen etc), together with a £100 refundable bond on all social events.

For more details call in at the Town Council office on the Market Square or telephone: 01623 742475.

CHESTNUTS CHILD CARE

OPEN 7 DAYS A WEEK - 2, 3 & 4 YEAR OLD FREE FUNDED PLACEMENTS.

Provision for Children with Special Education / Additional Needs.

Home from Home Award Winning 'Outstanding Setting'.

OFSTED & NCMA Registered - Registered from Birth to 19 Years of Age.

Shift Workers Accommodated - Before and After School Care.

School 'Pick Up' and 'Drop Off' - Childcare Vouchers Accepted.



ALL STAFF TRAINED TO A MINIMUM OF LEVEL 3 IN CHILDCARE - FREE 'TASTER' SESSIONS

For more information call CHRISTINE SCOTT on: 01623 743088 / 07757 993815

chestnuts.child.care@hotmail.com www.chestnutschildcarelimited.co.uk

N & P TYRES

Unit 18, Kettles' Yard, Langwith Junction

**FULL VEHICLE
SERVICING
AVAILABLE**

**SERVICING - BRAKES
BATTERIES - EXHAUSTS
M.O.T. REPAIRS**

*NEW & PART
WORN TYRES
AVAILABLE*



for

Cars, 4x4's & Light Commercial

**Peter Millward
CAR SALES**

***Quality Used Cars
Brought & Sold.
Clean Cars Bought for
CASH !!***



***Stock Changing
on a
Regular Basis !!***

THE BEST DEAL AROUND

01623 740111

***NOW OFFERING
ALLOY WHEEL WELDING***

GARDENER'S CROSSWORD CLUES ACROSS

1. Completely level or even with a neighbouring surface (5)
5. State or quality of having or producing clear visual definition (5)
8. Representation of the external form of a person or thing (5)
9. Signal given to an actor or performer to begin their speech or performance (3)
11. Asian tree with a poisonous milky sap (4)
12. Fanatical and uncompromising follower of a religion or policy (6)
13. Sharp pointed duelling sword (4)
16. Take property unlawfully from someone (3)
17. Break free from confinement or control (6)
19. Strongest or central tower of a castle (4)
20. Used to refer to more than just oneself (2)
21. Look or stare in a lecherous manner (4)
24. Small wingless insect living in a complex social colony (3)
26. Touch quickly and gently with the hand (3)
28. Portable battery powered electrical lamp (5)
30. Easily agitated or alarmed (7)
31. Royal botanical gardens in London (3)
32. Appropriate, suitable, quick to learn (3)
33. Christopher, most highly acclaimed English architect (4)
36. Physical destruction or collapse (4)
37. Beginning of something, especially something unpleasant (5)
38. Immediately after the present one (4)
41. Six legal balls in a game of cricket (4)
42. Give someone intellectual, moral and social instruction (7)
45. Indian politician or head of an organisation (4)
46. Loose sleeveless garment reaching to the thigh or knees (5)
47. Most excellent or desirable type of quality (4)

CLUES DOWN

1. High pitched wind instrument, usually held horizontally to the mouth (5)
2. The time allowed for the payment of foreign bills of exchange (6)
3. Informal word used as a friendly greeting (2)
4. Network of paths and hedges designed as a puzzle which one has to find a way in and out (4)
5. Flat topped conical red hat once worn by comedian Tommy Cooper (3)
6. White soft earthy limestone used for drawing or writing (5)
7. Number of points, goals or runs achieved in a game (5)
10. Imagined perfect place or state of things (6)
13. Particular period of time in history (5)
14. Projecting pin or bolt used for hanging(3)
15. The day or period before the present (3)
18. Faint, especially from extreme emotion (5)
22. In the Christian Church, the period preceding Easter (4)

PRECIOUS PAWS Professional Dog Grooming

114 Slant Lane, Shirebrook, Mansfield, Notts. NG20 8QR

Qualified Level 3 City & Guilds - CPR & First Aid Trained

FULLY QUALIFIED IN:

Micro Chipping, Clipping, Nail Trimming, Anal Gland Cleaning, Eye and Deep Ear Cleaning.
Shampoos for ALL coats and Sensitive Skin available.
Puppies from 8 weeks to 16 weeks FREE Grooms.

Telephone DEBRA SMITH on: 07966 501082 for appointment or more information.

'The wellbeing of all dogs in my care is foremost.'

- 23. Put upside down or in the opposite position (6)
 - 24. Craft built by Noah to save the animals (3)
 - 26. Sacred song or hymn (5)
 - 27. Name of a book, composition or other artistic work (5)
 - 29. Place or angle where two sides or edges meet (6)
 - 33. Alcoholic drink made from grape juice (4)
 - 34. Brief written account of facts, topics or thoughts (4)
 - 35. Give confidence to (6)
 - 39. Opening that allows air, gas or liquid through (4)
 - 40. Second letter of the Greek alphabet (4)
 - 41. Choose or select (3)
 - 43. Expression or application of creative skill (3)
 - 44. Symbol for the 21st element of the periodic table (2)
- Once completed send to: 160 Station Road Shirebrook, NG20 8UG.**

1		2		3		4		5		6		7		
				8								9	10	
11								12						
				13	14		15					16		
17	18									19				
	20			21		22			23					
								24		25		26		27
28			29			30								
								31				32		
		33			34		35							
36					37									
		38									39		40	
41						42			43					
				44							45			
46							47							

Name:

Address:

.....

Phone No.

P. GLASBY PLUMBING & HEATING SERVICES



215484

**Specialists in Repairs, Servicing & Installation.
Bathrooms & Kitchens,
Tiling, Design & Planning,
General Building Work - All Electrical Work**

FREE ESTIMATES

Telephone: 01623 744117 / 07973 450047

COLLIERY MEMORIAL FUND

Please find an update from the Shirebrook Colliery Memorial Fund Committee.

We're more than half way there !! To date a staggering **£100,000** has been raised in less than six months, from people who have contributed to the Memorial Fund and submitting their names or the names of a loved, to be engraved on the Memorial.

The amount of support that we have received from the Shirebrook 'mining' community is nothing short of a miracle, but there's still a long way to go reach our total of **£180,000**, and to achieve our goal of erecting a Memorial dedicated to Shirebrook's history and the people of Shirebrook, and to those who sadly lost their lives at the pit.

Peter Walker, our commissioned sculptor, has sent us the initial drawing of the proposed memorial to share with you.

The initial drawing shows the wife and child above ground with the miner, husband and father working away underground.

This figure will sit above the plinth with the engravement plaques, with all submitted names, engraved on all four sides, and the names of those that lost their lives on the rear of the monument.

We acknowledge that some may find it difficult to imagine the completed sculpture but we hope that this drawing will give you all a better idea.

Peter Walker has told us that this is a unique design and there is nothing like it anywhere in the world in terms of mining monuments / statues.

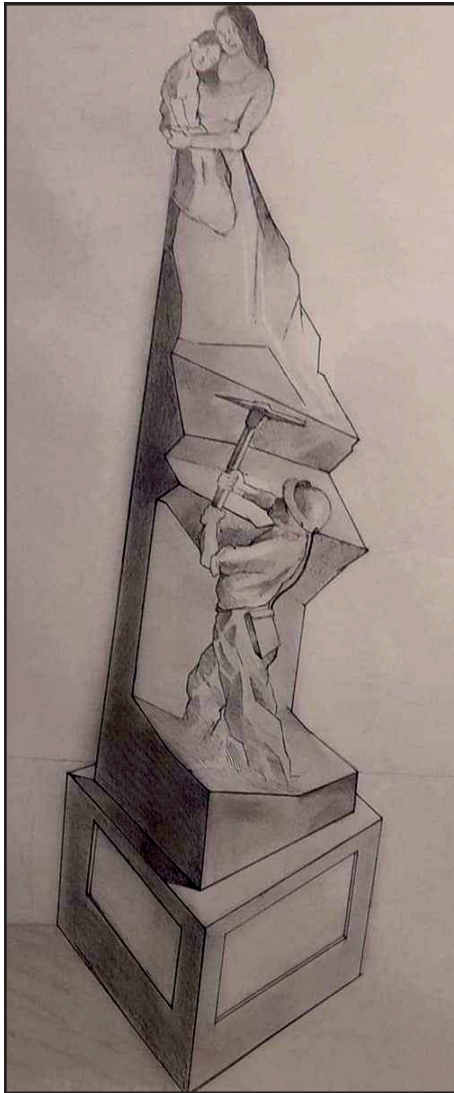
Our **'Memorial Team'** are still taking names of residents who are interested in contributing and having their name, or a loved ones name, who was/is a Shirebrook resident or former miner.

The statue and dedicated names will be in situ for years to come, and will help future residents of Shirebrook to remember Shirebrook's history and its former residents.

If you are interested in donating and having a name added to the memorial, or for any further information, please don't hesitate to get in touch with us.

Contact **Baz Henderson** on **07884 945254**, **Bruce Towers** on **07587 052656** or **John Thomas** on **07814 042560**.

There's still a long way to go my mining Brother's and Sister's. Thank you from the all our Committee: Baz Henderson, Alan Gascoyne, Bruce Towers, John Thomas, Mark Hill.



LOCAL LOCAL LOCAL !!

As we come out of Lockdown, more than ever, our local shops and businesses will need your support !!

Many, following government restrictions, have had to close for most of the past twelve months or so and may find the next few months strange and difficult, compared to how they operated before the pandemic.

Up and down the country shoppers, restricted from travelling, have been doing their shopping local. Why not carry on that trend whenever possible !!